



EDITED BY
VALENTINA
ZUCCHI

ILLUSTRATED BY
ILARIA
FACCIOLI

DESIGNED BY
frush

THE IRIS AND THE LION



Before starting our walk, it's best to introduce two Florentine protagonists. They are a flower and an animal. The flower is the **IRIS**: according to the legend, when the ancient Romans arrived here, they found a huge expanse of flowers and named the new colony **Florentia**. There would have been numerous irises among these, and they are still remembered in the city's coat-of-arms: it is called the **giglio** (lily) of Florence, but don't be fooled. It's an iris. The animal is the **LION** and even has a name, **Marzocco**. Needless to say, the lion is one of the bravest and most regal animals: the name recalls the god of War, **Mars**; but also, Florence has fought and won many wars over the centuries.



Florence is one of the most beloved cities in the world: every year millions of people cross oceans and travel miles to see its wonders with their own eyes. One thing is certain. When you visit a city as a family, everything changes: times, distances, interests and habits. This is why we created **FIRENZE FOR FAMILIES**.

HERE YOU'LL FIND THE PLACES BEST SUITED TO CHILDREN, TEENAGERS AND THEIR PARENTS, TO ENJOY THE CITY IN A MORE PERSONAL WAY AND TAKE HOME A NEW EXPERIENCE.



and tall tower (you can climb it to the top!). It has hosted the city's rulers since the Middle Ages and still hosts the Mayor of Florence. In the 16th century, it became the home of one of Florence's most important families, the Medici; if you take part in the countless family visits and activities. You'll breathe in an almost magical atmosphere, imagining yourself to be dukes, duchesses, princes and princesses.

1 **Piazza Signoria and Museo di Palazzo Vecchio**



● **PALAZZO VECCHIO**

It is the heart of Florence. The building looks almost like a castle with its battlements

● **PIAZZA SIGNORIA**

When you are in Piazza Signoria, look up. You'll be able to identify both the emblem of Florence and the Marzocco lion: can you find them? The piazza or square is a sort of theatre and its statues look like



"Biancone") on the chariot with his retinue; the brave Judith and fearless David, ready to seek justice for their people; the astute heroes, victorious over horrible creatures - Hercules over the monster Cacus, Perseus over the frightening Medusa; and again the numerous sculptures that populate the large loggia. Finishing with the brave Cosimo I de' Medici, about to depart on horseback.

motionless players, ready to come to life when you least expect it: the god Neptune in the marvellous fountain (who the Florentines have always called

ASK ABOUT FAMILY ACTIVITIES AT THE TICKET OFFICE, YOU CAN CLIMB UP THE TOWER IF YOU ARE 6 OR OVER.

useful information

Museo di Palazzo Vecchio,
piazza Signoria 1
tel. 055-2760234

- cultura.comune.fi.it/pagina/musei-civici-fiorentini/palazzo-vecchio
- musefirenze.it

2 Piazza SS. Annunziata and Museo degli Innocenti



● MUSEO DEGLI INNOCENTI

In Florence, this is a place for children, par excellence: from the 15th century, beneath these arcades, less fortunate children (called "innocents") were taken in and raised: it is no coincidence that the round arches bear glazed terra cotta depictions of swaddled babies in white against a blue background. In the marvellous courtyards, monumental halls and museum, we can feel the history of this incredible place,



also thanks to the proposals for families. From the top of the small terrace on the top floor of the building, you can enjoy a wonderful view and rare silence.



THE SYMBOL OF GRAND DUKE FERDINAND I IS A QUEEN BEE SURROUNDED BY THE OTHER BEES.



TRY TO COUNT THEM. ON THE BASE, HOW MANY ARE THERE ALTOGETHER?

● PIAZZA SS. ANNUNZIATA

The piazza also seems like a place made especially for children: surrounded by the reassuring arcades of the loggias and protected by none other than Ferdinando de' Medici on horseback, it's the ideal place for a short break or playing.

useful information

Museo degli Innocenti,
piazza SS. Annunziata 13
● istitutodeglinnocenti.it
● museodeglinnocenti.it



3 PIAZZA DUOMO and Grande Museo del Duomo

the Cathedral, the Bell Tower and the Baptistry stand out against the blue of the sky, but also the grey

● PIAZZA DUOMO

And here is another breath-taking piazza: the giant silhouettes of

THERE ARE 3 COLOURS OF MARBLE. WHAT ARE THEY? COLOUR THE SQUARES HERE BELOW!





of the clouds.

The city's main saints are remembered here: St. Reparata, St. John the Baptist and St. Zenobius. Originally, the Cathedral was dedicated to St. Reparata, but today it is named Santa Maria del Fiore. The Baptistry is named after St. John the Baptist; he is the city's patron saint and is celebrated on June 24th. St. Zenobius is instead remembered by a column, which recalls a miracle that occurred in that place:

where the saint's corpse passed by, a dead tree suddenly bloomed again. The Cathedral's Dome, designed by Filippo Brunelleschi, is the symbol of Florence and quite famous throughout the world: you can climb up to the lantern, as the summit is called, and to the top of the Campanile, but also admire the Baptistry's gleaming mosaics, and explore the crypt of Santa Reparata or visit the exciting Museo dell'Opera del Duomo, behind the Cathedral.



useful information

Grande Museo del Duomo,
piazza Duomo 9

● ilgrandemuseodelduomo.it

WHO ARE THESE CHARACTERS? MATCH THEIR IMAGES TO THE CORRESPONDING DESCRIPTIONS

He is an architect, sculptor and imaginative artist of 16th century Florence: the Boboli grotto was his creation.



ST. JOHN
THE BAPTIST



FILIPPO
BRUNELLESCHI

He gave a new face to medieval Florence and was responsible for some of the city's main buildings.

Called Pippo by his friends, he was a famous Renaissance architect: he designed the Dome of the Cathedral and the Istituto degli Innocenti.



ARNOLFO
DI CAMBIO

BERNARDO
BUONTALENTI



He is the city's patron saint and is celebrated on June 24th; all baptisms in the world are dedicated to him.

4 Piazza della Repubblica



You are right in the centre of the city: a column topped by a statue, symbol of Dovizia, in other words, abundance and wealth. It marks the precise intersection of the main streets of Roman Florence, which was called Florentia. The ancient Roman city's forum was here, with temples and public buildings; today archaeological traces are still found in the subsoil.



arcades that we still see today.

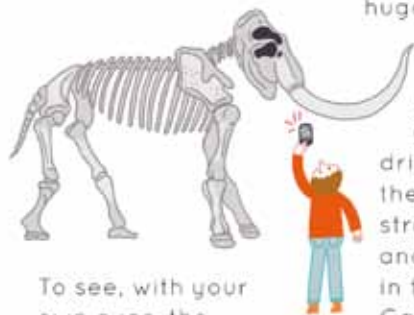
The piazza was named after King Victor Emmanuel at the end of the 19th century, with the construction of the buildings with wide

useful information

via La Pira 4

• msn.unifi.it

5 Museo di Storia Naturale: Paleontologia Orto botanico



To see, with your own eyes, the skeletons of huge elephants, lions and sabre-toothed tigers – who lived in Florence millions of years ago, when the savannah was here – just enter this museum: among skeletons and fossils you can get an idea of the Earth in a distant

past and discover the evolution of many animals in history. At the end of the itinerary, you can even imagine walking on the ocean's floor next to a huge whale! And while,

in the nearby Botanical section, you can admire over four million dried plants, out in the open air you can stroll among the trees and fragrant flowers in the Botanical Garden.

Some of these you absolutely must see: a specimen of an almost three-hundred-year old yew and a specimen of the last "discovered" tree in the world, the *Wollemia nobilis*, discovered in Australia only twenty-five years ago!

6 Fondazione Scienza e Tecnica



If instead you want to travel in space and dream of infinite worlds, this is the place for you: here you can experience the magic of the starry sky, discover the myths and mysteries hiding behind stars, planets and galaxies. Under the celestial vault of the planetarium, time seems to really stand still: check the dates of the activities so you don't miss a single one. And if you still have some time, you can admire the curious collections of animals, plants and minerals that are kept there and see some



incredible tools for Physics, all restored and working.



useful information

Via Giusti 29

• fstfirenze.it

7 Museo Archeologico Nazionale

Who has heard of the Chimera? That terrible monster with a lion's body and snake's tail, complete with a goat's head on its back?

Everyone was terrified until a brave hero (his name was Bellerophon) defeated it with the help of the famous winged horse Pegasus. Here, not only can you see the Chimera, but also discover the endless stories hidden in the objects of peoples who lived thousands of years ago: the Egyptians, Greeks, Romans and Etruscans. Sarcophagi, mummies, vases, statues that even today have the



power to bring the past back to life and enchant us with their myths.



Useful information

Piazza S. Maria Annunziata 9b
• polomusealetoscana.beniculturali.it

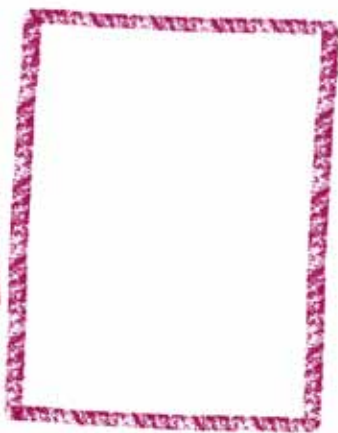


8 Palazzo Medici Riccardi

Here begins the history of the most famous dynasty in Florence: the Medici. To tell the truth, the first traces of the family are found in the country, the Mugello, but very soon, they began to trade and do business in the city. The palace was commissioned by Cosimo the Elder, the forefather of the family: inside, one of the most beautiful spaces is

definitely the Chapel of the Magi, where the three Magi move towards Bethlehem with their sumptuous procession. In the 17th century the building was purchased by the Riccardi family and was enlarged and transformed: an example is the splendid gallery of mirrors, with four large mirrors painted with flowers, plants and animals. Looking at your reflection is almost like stepping into it!

USE THE MIRRORS TO MAKE A
PORTRAIT OF YOURSELF OR
ANYONE YOU WANT.



ASK THE TICKET OFFICE
FOR INFORMATION ON
FAMILY ACTIVITIES.

useful information

via Cavour 1

● palazzomediciriccardi.it

9 Santa Maria Novella

In its harmonious white and green geometry, the facade of the church appears to have been drawn with set square and ruler by a great expert architect: his name is Leon Battista Alberti. Inside you will find breath-taking masterpieces (in addition to precious silence); in fact, the basilica houses the famous Crosses of Giotto, Brunelleschi and Masaccio as well as beautiful decorated chapels. Lovely frescos also adorn the cloisters and ancient spaces of the convent, so simple and, at the same time, elegant.



You can imagine the Dominican friars of centuries ago walking, reflecting and praying in the peace of these spaces, in that special atmosphere found in religious places. To learn more, you can take part in family tours to explore Santa Maria Novella.



useful information

- p.zza S. Maria Novella
- smn.it
- cultura.comune.fi.it/pagina/musei-civici-fiorentini/santa-maria-novella
- musefirenze.it



10 Museo Novecento

Florence is known throughout the world as the city of the Renaissance: and certainly there is no lack of 15th and 16th-century masterpieces. But if you want to breathe a more contemporary air, don't miss this museum: it's dedicated to the 20th century, the century that just ended (we are now in the 21st century). It's the century in which your grandparents and parents were born, but also the century in which art underwent

a true revolution. Here you can lose yourself among installations, paintings, sculptures, drawings, photographs, videos, to discover that art really has no boundaries.



useful information

p.zza S. Maria Novella 10
● museonovecento.it

11 Museo Marino Marini



Entering this building, you'll have the impression of visiting a church (in fact, this was once the church of San Pancrazio) but soon you'll notice that it's quite the opposite: a proper museum that brings together the works of an important 20th century Tuscan artist, Marino Marini. His name is impossible to forget, as are his works: they seem to come from who knows where, with their ancient yet very modern flavour. The artist called them "miracles". In the museum are endless variations of horses,

riders, warriors, dancers and Pomone, the ancient goddess mothers: walking among the works feels like going into a fairy tale.



useful information

piazza San Pancrazio
● museomarinomarini.it

DRAW YOUR
FAVOURITE RIDER



12 Palazzo Strozzi

This impressive palace is built in hard yellowish stone, typical of Florence, and was the home of one of the city's most powerful families: the Strozzi, rivals of the Medici in business, wealth and power. Today the palace hosts exhibitions of ancient and contemporary art that alternate throughout the year,

for which there are countless activities for children and families. You'll also find a kit designed especially for families, which will make your visit more fun and complete: ask for information at the ticket office.

useful information

piazza degli Strozzi
● palazzostrozzi.org
tel. 055.2645155

THE STROZZI FAMILY COAT-OF-ARMS HAS A RED BAND WITH 3 SILVER MOONS ON A GOLD SHIELD. THE MEDICI FAMILY'S HAS A SERIES OF SPHERES; THE RICCARDI FAMILY'S, A KEY. CREATE A COAT-OF-ARMS FOR YOUR FAMILY AND DRAW IT HERE.



AROUND THE BOAR'S PAWS, YOU'LL NOTICE SMALL ANIMALS; FIND THEM AND DRAW THEM HERE.

13 Loggia del Porcellino

You cannot leave Florence without rubbing the snout of the city's most famous animal. It's located in the city centre, next to an elegant loggia that housed a silk and precious goods market in the 16th century. Next to the loggia is a fine fountain with a bronze pig: actually it

is a boar. It sits nearby a small pool, with ears strained to catch sounds of danger. A famous Danish writer for children, Hans Christian Andersen, was so impressed by this animal that he made him the protagonist of the story *The Bronze Pig*, in which the boar flies over Florence ridden by a child!

16 Palazzo Davanzati

Now imagine being rich merchants or important 14th-century bankers and enter this palace: cross the courtyard, go up the steep stairs and put yourself in the shoes of those who lived within these walls. On the three floors that you'll visit, one above the other, you'll find large sitting rooms, small studios, bedrooms and "agiamenti", or small medieval bathrooms. Don't miss the parrots' room, named for the numerous parrots painted on the walls; have fun trying to count them! On the last floor you'll finally find the kitchen, strategically

positioned at the top of the building to limit damage from fires.

useful information

via Porta Rossa 13
• bargellomusei.beniculturali.it/musei/4/davanzati



17 Gallerie degli Uffizi

This is the museum that everyone in Florence visits: a U-shaped building, commissioned by Cosimo I de' Medici and built by Giorgio Vasari to house the city "offices" and magistratures. It also housed the family's works of art and today at the Uffizi we still find the masterpieces of great artists, including Cimabue, Giotto, Beato Angelico, Piero della Francesca, Leonardo, Michelangelo, Botticelli, Raphael, Titian, and Caravaggio. Every painting deserves time and silence; choose which works you prefer and enjoy them in each



detail. Even the rooms themselves are wonderful: one of these, the Tribuna, even has a ceiling covered with shimmering mother-of-pearl shells!

FOR THE VISIT, IT'S BEST TO AVOID PEAK HOURS WITH LONG OR EXCESSIVE WAITS; AND ON FAMILY SUNDAYS AT THE MUSEUM (CHECK THE CALENDAR) THERE ARE ACTIVITIES DEDICATED TO CHILDREN!

ONE AMONG ALL THESE
MASTERPIECES IS MISSING.
YOURS!



YOU CAN BE ARTISTS BY
DRAWING THEM ABOVE



useful information

piazzale degli Uffizi
• uffizi.it

WHO ARE
THESE PEOPLE?
MATCH THEIR
IMAGES TO THE
CORRESPONDING
DESCRIPTIONS

Medieval painter,
sculptor and architect;
it is said that he knew
how to draw a perfect
circle freehand!

MICHELANGELO
BUONARROTI



LEONARDO
DA VINCI



He is the great poet,
dressed in red, with an
aquiline nose; a laurel
wreath... And the Divine
Comedy under his arm.

He is one of the most famous artists in the world, to the point of being called "divine".

GIOTTO DI BONDONE

DANTE ALIGHIERI

He was so brilliant he became a myth; his research still makes us dream.



15 Museo Fiorentino della Preistoria

If you want to go back even further in time, we suggest this museum: in its rooms you can retrace mankind's first steps on Earth and observe ancient artefacts. We are in prehistory, that almost legendary era of millions of years ago, and the museum exhibits traces of the human presence from the Palaeolithic to the Metal Age in the Florentine area, in



Italy, in Europe and in the world: stone tools and artefacts, in bone, clay, metal, art objects, human and animal fossil remains. Among these is the skeleton of a prehistoric bear!

useful information

Via Sant'Egidio 21
#museoflorentinopreistoria.it

17 Museo di Storia Naturale: Antropologia

We pass from the world of nature to that of men; in Palazzo Nontinuto (that's the name) you can travel around the world and discover how the peoples of every corner of the planet lived. Here are spectacular collections of clothes, jewellery, tools, musical instruments, weapons, masks and trophies, but also skeletons, skulls and mummies from the far corners of Europe, America, Africa and Asia. The first objects were given as gifts to the Medici family by travellers returning to Florence from the



exploration expeditions to the New World, that is, the newly "discovered" America.



useful information

via del Proconsolo 12
● msn.unifi.it

18 Santa Croce

While the Dominican friars had their convent in Santa Maria Novella, on the opposite side of the city in the Middle Ages were the Franciscan friars of the Church of Santa Croce. Today the basilica is famous for the tombs of illustrious men who rest here, including Michelangelo, Galileo, Ghiberti, Machiavelli, Foscolo and Rossini. But the tombs are not the only treasures, and you only have to walk through the church to understand, past masterpieces by Giotto and Donatello. The itinerary continues in the cloisters and spaces of the convent; in the Sacristy with



the Cross by Cimabue, symbol of the flood in Florence: on November 4, 1966, the Arno river overflowed and the Santa Croce complex was one of the first to be flooded with water. This painting, patiently restored but quite ruined, is a vivid memory of it.

useful information

p.zza S. Croce
● santacroceopera.it



19 Le Murate

The name is a bit unusual: it was a convent of nuns, who had moved here from tiny dwellings on one of the city's bridges, Ponte alle Grazie, where they had themselves closed in without ever leaving: in fact, they were walled in. The convent became the city's jail in the nineteenth century and remained so until 1986. This is why you can visit the ancient cells: including "hard-time prison", maximum security, and the panoptic,

which allowed the most effective surveillance of prisoners.

Today it's one of the city's liveliest centres, hosting a contemporary art centre. It's also one of the most suitable places for families: its squares and courtyards are safe for resting and playing. On some weekends there are also art itineraries and workshops.



20 Museo Horne

After experiencing life in a medieval house (do you remember Palazzo Davanzati?), it's time to understand how people lived in the Renaissance, thanks to Museo Horne: the English collector Herbert Percy Horne bought this building and furnished it precisely with the intention of reliving the atmosphere of a sumptuous Florentine 15th century residence.

The rooms house beautiful paintings and sculptures, but also furnishings, furniture and objects of everyday life from that golden age. One of the most famous works is the painting with Santo Stefano by Giotto, all



shining gold and very refined; the saint has a stone on his head, in memory of his death; he was in fact stoned to death by the people.



HERBERT PERCY HORNE COLLECTED
ANCIENT WORKS OF ART: WHAT
WOULD YOU LIKE TO COLLECT?

21 Museo Galileo



If you love science you must see this museum dedicated to the famous Tuscan scientist, Galileo Galilei, who made great astronomical discoveries and invented the scientific method. Since then, if we want to verify a hypothesis we must collect data, observe and analyse it to prove whether or not it is true. Galileo spent his life between Florence, Pisa and Padua but it was in the hills of Florence that the scientist spent the last years of his life. At the museum you will find his telescopes and the instruments he developed, but also terrestrial globes, celestial spheres, astrolabes, clocks and



lenses, and compasses, mostly from the Medici and Lorraine collections, as well as spectacular reconstructions and models from his studies.

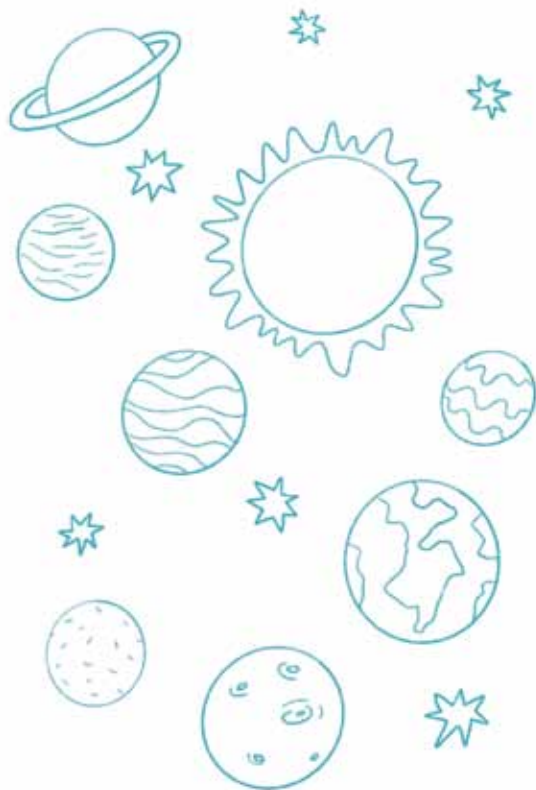


useful information

piazza Giudici 1
● museogalileo.it

THE MUSEUM HAS NUMEROUS
ACTIVITIES FOR FAMILIES: CALL THE
NUMBER 055 265344

COLOUR IN THE STARS AND PLANETS
THAT GALILEO DEDICATED
HIS WHOLE LIFE TO



39

WHO ARE
THESE PEOPLE?
MATCH THEIR
IMAGES TO THE
CORRESPONDING
DESCRIPTIONS

She is the last representative of the Medici dynasty; thanks to her family pact, the Medici collections will remain in Florence.

LORENZO THE
MAGNIFICENT

GALILEO
GALILEI

He was the first Grand Duke of Tuscany; you can meet him on horseback in Piazza Signoria.

40



COSIMO I
DE' MEDICI

He is the most famous member of the Medici family; his name is linked to the revival of the arts, sciences and literature.

A very famous scientist and scholar of the universe; to him we owe great discoveries and progress.



ANNA MARIA
LUISA DE' MEDICI



22 Ponte Vecchio



Like many cities, Florence was settled near a river, the Arno River, along the ancient Via Cassia, an important trade route. The first bridge that crossed the river was very simple, made of wood; more structured designs followed, regularly swept away by the force of the floods. The bridge we see today dates back to the middle of the

14th century and, from then, it has resisted the force of the river's flooding: crossing it, you'll notice goldsmiths and jewellery shops with glittering windows, above which runs the Vasari corridor, that "aerial passage" that connects Palazzo Vecchio with Palazzo Pitti. From the middle of the bridge, you can enjoy a wonderful view of the river.



23 Palazzo Pitti and Giardino di Boboli

A few years after settling in Palazzo Vecchio, the Medici decided to purchase a new building, Palazzo Pitti. They expanded it and enriched it and transformed the Boboli hill into an immense wonderful Italian garden: here you can explore grottos, fountains and sculptures set in nature. You'll almost feel like you've left the city. The palace, on the other hand, has sumptuous rooms, treasures and artistic masterpieces that will fill your eyes with beauty.

These came out of the numerous renovations over the course of four centuries of history and the collecting of three dynasties: in 1743 in fact, on the death of the last Medici, Anna Maria Luisa, the government of Florence passed to the Hapsburg-Lorraine, and during the city's time as capital of Italy, the palace was inhabited by the Savoy.



useful information

- plazzo Pitti
- uffizi.it/palazzo-pitti
- uffizi.it/giardino-boboli

24 Museo di Storia Naturale: Zoologia



MATCH EACH FOOTPRINT TO THE CORRESPONDING ANIMAL.

Not far from Palazzo Pitti is the Zoology section of the Museum of Natural History, called La Specola: here the animals seem truly alive! Hundreds of thousands of fish, amphibians, reptiles, mammals and birds and three million insects and molluscs; among others, crocodiles and giant tortoises, sharks and snakes, ostriches and parrots, rhinos, kangaroos, monkeys, even a hippopotamus. The itinerary ends with a collection of wax replicas of the human body created between the 18th and 19th centuries: if it doesn't scare you, you can discover a lot about the human body and how it works.



useful information

- via Romana 17
- msn.unifi.it

THE MUSEUM IS TEMPORARILY CLOSED.



25 Museo Stefano Bardini

This special place is different from the others: the walls of the rooms are all blue and there are works of art of every kind: not only paintings, drawings and sculptures by great artists, but also chests, carpets, bronzes, weapons, porcelains, frames. Stefano Bardini was a special person; he loved art in all its forms and throughout his life collected thousands of works and objects, keeping them for himself and selling them to experts and enthusiasts from all over the world. This, in effect, was his elegant shop: an entire building, set up for this purpose, to amaze



everyone. It will happen to you too! In a room on the ground floor you'll find the ancient version of the boar from the Loggia del Porcellino; in fact, the one in the loggia is a replica from 1800, while this animal was cast two centuries before by Pietro Tacca.

useful information

via dei Bardi, 26
● cultura.comune.fi.it/pagina/musei-civici-fiorentini/museo-stefano-bardini
● musefirenze.it

FAMILY ACTIVITIES ARE PLANNED FOR SOME WEEKENDS.

45



26 Villa and Giardino Bardini

Stefano Bardini's story continues: he was one of the most famous characters in Florence and his shop on the banks of the river gave life to his wonderful garden, which housed his villa in the upper part. You can visit both of them (there are two entrances, one near Museo Bardini, in Via dei Bardi, another along the Costa San Giorgio) and it is well worth it: the park has an English wood, an Italian

garden, orchards and pergolas (including a wonderful wisteria), while the Bardini dwelling is now home to important exhibitions. From here you can also enjoy a beautiful view of the city.



useful information

Costa San Giorgio or via dei Bardi, 1 red
● villabardini.it

46

27 Museo Casa Rodolfo Siviero

Rodolfo Siviero had a really adventurous life: he was a clever courageous secret agent during WWII and it is thanks to him that many masterpieces were not stolen and taken to Germany, or were able to return to Italy. The rooms of his house, with a wealth of important sculptures, paintings and furnishings and a certain mysterious charm, remind us that works of art are not personal trophies and belong to all of us.



useful information

Lungarno Serristori 1-3.
● museocasasiviero.it



28 Torre San Niccolò

This space, open in summer with a holiday atmosphere, is the tower, Torre San Niccolò: going up its 163 steps you can explore the city's history and its destiny in the Middle Ages, imagine the walls which defended it and try to understand the purpose of the tower-doors for the garrison... as well as admiring Florence from an absolutely unique spot. We recommend sun!! Near the tower, just below Lungarno Serristori, is the Terzo Giardino, a spontaneous green area above which you'll see geometric lines: the

shapes recall the Italian Renaissance garden and the paths these create let you walk along the river.



useful information

piazza Poggi
● musefirenze.it

THE TOWER IS OPEN FROM JUNE 24TH TO SEPTEMBER 30TH. YOU CAN CLIMB UP IT FROM AGE 8 ONWARD

Piazzale Michelangelo, Giardino delle Rose, Giardino dell'Iris

You cannot leave Florence without going through these magical places, at the end of a beautiful walk on the Oltrarno. Walking along the "ramps", streets that intertwine with fountains and alleys going up the San Miniato hill, you come to Giardino delle Rose, a beautiful green space with hundreds of varieties of roses, and with sculptures by the artist Jean Follon, including a large, curled-up cat. From here you can enjoy a



wonderful view of the city, the same view that you have from Piazzale Michelangelo, where everyone flocks to admire the sunset in the shadow of the bronze copy of the David, or from Giardino dell'Iris, dedicated to the flower of Florence. In this garden, between April and May, you can admire many varieties.



useful information

v.le Giuseppe Poggi 2
● societaitalianairis.com/chi-siamo/giardino

GIARDINO DELL'IRIS,
VIALE MICHELANGELO 82,
OPEN FROM APRIL 25th TO
MAY 20th OR BY APPOINTMENT



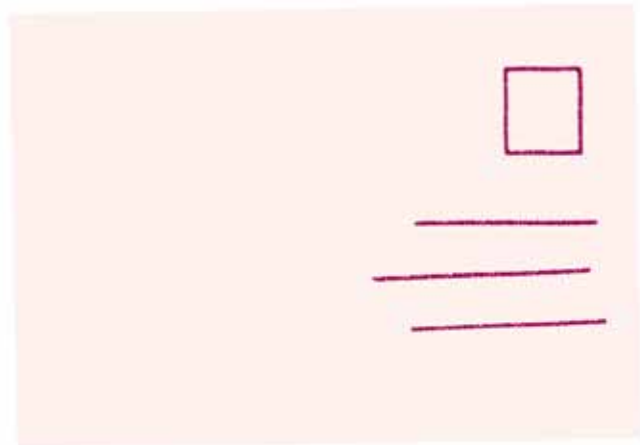
30 Forte di Belvedere

On top of the Boboli hill stands Forte di Belvedere. To get there you have to walk for bit, but you'll be rewarded. It is Forte San Giorgio, built at the end of the 16th century to defend the city from the Medici family and better known as Forte Belvedere for the incredible view from up here. It's a wonderful terrace overlooking Florence and almost feels like you can touch the

buildings that make this city unique worldwide. Its ramparts and main building can be visited only in summer and host major exhibitions of contemporary art, inviting us to reflect on how the past and present can interact with each other.



51



HERE YOU CAN DESIGN YOUR FLORENCE POSTCARD.



useful information

via San Leonardo 1
 • musefirenze.it
 • cultura.comune.fi.it/pagina/musei-civici-fiorentini/forte-di-belvedere

52

Parco delle Cascine

The largest park in the whole city runs along the river for kilometres and is ideal for a break from the big museums and beauties of the centre. As the name suggests, at one time this was countryside; in the greenery of the Cascine you can run, skate, ride a bike, have a picnic, play football, go on a swing or slide, swim in the pool, simply walk or rest in the relaxing atmosphere between the garden and river. Along the park's avenues, you'll even find a strange pyramid that once served as an ice house. If you have the time and energy to get to the end of the walk you'll find



the bust in memory of a young Indian prince who died suddenly in Florence on his journey from India to London; his ashes were scattered right here, where the Arno river meets its tributary, the Mugnone.



AT THE BEGINNING OF THE PARK, NEAR THE RIVER, YOU CAN SEE SOME GINKGO BILOBA TREES. THIS SPECIES IS VERY ANCIENT AND CONSIDERED A LIVING FOSSIL. ITS LEAVES HAVE A VERY PARTICULAR SHAPE. TRY TO TRANSFORM IT INTO WHATEVER YOU WANT.



AND IF YOU WANT TO LIE DOWN ON THE RIVER BANK AND LOOK AT THE SKY, YOU SHOULD TRANSFER TO THIS SHEET WHAT YOU LIKE THE MOST. YOU CAN DRAW THE SHAPES OF CLOUDS OR FLOWERS, OR WRITE WHAT YOU'RE FEELING.



PLAY AREAS: T. JEFFERSON GARDEN, PIAZZALE T. JEFFERSON AND GARDEN OF NICHOLAS GREEN, PIAZZALE DELLE CASCINE, TRAMWAY T4 DIRECTION VILLA COSTANZA FROM THE FLORENCE SMN STATION, CASCINE STOP

useful information

Visitor Centre,
piazzale delle Cascine

● parcodellecascine.comune.fi.it



32 Museo and Parco Stibbert



In Florence, the Museo Stibbert is one of the most beloved places for children (and others): here you can meet heroic knights from all over the world, protected by their shining armour or dressed in their colourful protection garments. In fact, Frederick Stibbert, the gentleman who once lived in this building, had a great passion for armour, weapons and costumes and he collected many of them. Each room takes us into a distant world, so that it really feels like traveling through time and space.

You can also try on a helmet or mail surplice and test your courage. A beautiful garden extends around the museum: the ideal place for imaginative adventures along trails and around mysterious little temples.



useful information

via F. Stibbert 26
● museostibbert.it

TRAMWAY T4 DIRECTION CAREGGI FROM FLORENCE SMN STATION, MURATORI STOP + 15 MINUTES ON FOOT

53 Il giardino di Archimede



Archimedes is the name of a mathematician born in Siracusa, who you may already have heard of: he is one of the most famous scientists in the history of all time and that's why the mathematics museum is dedicated to him.

If you think about it, in fact, most museums deal with art, history, science, almost never with mathematics! Visiting this museum (we suggest you look at the calendar of Mathematical Sundays) you can explore while enjoying all the secrets of numbers, formulas, calculations and theorems that until now you have only seen in

in class. This way you'll go back to school more prepared than ever!



useful information

via S. Bartolo
a Cintoia 19/a

• www.archimede.ms

TRAMWAY T1 DIRECTION VILLA
COSTANZA FROM THE FLORENCE
SM N STATION, FEDERIGA STOP
• LINE 9 MARTINI-BASSI STOP

54 Museo del calcio



This museum is one of the most loved by children (and not only) because it is all about the most watched and practiced sport in Italy. Going through its rooms and looking at the balls, jerseys, photographs, and trophies on display you can retrace the history and emotions of the Italian national team, its players and the great "Azzurri" champions, named for the jersey colour. The visit is also a chance to reflect on the rules of football, the values of sport and the extent of the game. If nothing else is going on, you can experience the excitement of treading the fields where the national team trains.



WHAT IS YOUR FAVOURITE TEAM? FILL THIS JERSEY WITH ITS COLOURS!



useful information

Via Aldo Palazzeschi 20
• figc.it/it/museo-del-calcio

ATAF LINE 17 FROM FLORENCE
SM N STATION, DIRECTION
VIALE VERGA

35 Villa di Petraia, Giardino di Villa di Castello



The Medici family always loved the country houses and the Medici villas and gardens are all around Florence. They are so beautiful that they have been designated as UNESCO world heritage for all humanity. Just outside the city you can visit Villa di Petraia and Villa di Castello: they are next to each other and deserve a look. Villa di Petraia will enchant you with its unmistakable tower, its marvellous garden, its masterpieces and frescoed courtyard that was created according to the wishes of Vittorio Emanuele II, King of

Italy, to transform into a ballroom; the same thing will happen to you in the garden of the Villa di Castello, where you can admire a wide variety of citrus fruit species and the incredible Animal grotto, where many animals seem to come to life.

TRAMWAY 11 + BUS 2 OR 28,
VIA SESTESE STOP

useful information

Via della Petraia 40 and
Via di Castello 44
● polomusealetoscano.beniculturali.it



Gardens with play areas



- GIARDINO DI PIAZZA D'AZEGLIO
piazza M. D'Azeglio 39
- PARCO DELL'ALBERETA
piazza Ravenna
- PARCO DELL'ANCONELLA
via Villamagna 41
- GIARDINO DELLA GARRAIA
via dell'Erto Canina 54
- ORTI DI PINTI
borgo Pinti 76
- GIARDINO DI PIAZZA TASSO
piazza T. Tasso
- GIARDINO DI BORGO ALLEGRI
borgo Allegri 18
- GIARDINO DELL'ORTICOLTURA
via Vittorio Emanuele II 4
- GIARDINO DI LUNGARNO
DEL TEMPIO
lungarno del Tempio
- PARCO DI VILLA STROZZI
via Pisana 77





Children's and youth libraries

- **BIBLIOTECA DELLE OBLATE**
via dell'Orto 24
- **BIBLIOTECANOVA ISOLOTTO**
via Chiusi 4/3 A
- **BIBLIOTECA PIETRO THOUAR**
piazza T. Tasso 3
- **BIBLIOTECA DEI RAGAZZI**
via Tripoli 34
- **BIBLIOTECA AGRICOLTURA**
via V. Emanuele II 4
- **BIBLIOTECA FABRIZIO DE ANDRÈ**
via delle Carra 2

Playrooms

- **GIANBURRASCA**
via Palazuolo 35
- **MARCONDIRONDERO**
via delle Carra 4
- **NIDIACI**
via Maffia 25
- **LA TANA DELL'ORSO**
viale De Amicis 21
- **IL CASTORO**
piazza Bartali 3b
- **LA CARROZZA DI HANS**
via Canova 170/b
- **LA MONDOLFIERA**
via dell'Anconella 3
- **L'ALBERO DI ALICE**
via del Cavallaccio 10
- **LA PRUA**
via della Sala 2/1
- **IL CASTELLO DEI BALOCCHI**
via del Pontarmo 92



61



GIORGIO
LA PIRA

From his pen came the most famous wooden puppet in the world, Pinocchio.



OTTAVIANO
AUGUSTO



62

WHO ARE
THESE PEOPLE?
MATCH THEIR
IMAGES TO THE
CORRESPONDING
DESCRIPTIONS

He is one of the most famous mayors in the history of Florence. He worked for peace and civilization.



CARLO
COLLODI

He is an ancient Roman emperor, to whom the birth of Florentia is attributed.



IN THE AREA
SURROUNDING
FLORENCE



Fiesole

6 KM FROM THE SANTA MARIA
NOVELLA STATION, BUS 7

Fiesole is a very ancient town in the hills and only a few minutes from the city centre: here you can learn more about the history and

habits of the Etruscans and Romans, but also wander among the trees and walk through meadows and woods.



Where to go

- AREA ARCHEOLOGICA, MUSEO ARCHEOLOGICO
via Portigiani
- MUSEO BANDINI
via Giovanni Duprè 1
- MUSEO PRIMO CONTI
via Giovanni Duprè 16
- PARCO DI MONTE CECERI

- CAVE DI MAIANO, FATTORIA DI MAIANO
via Benedetto da Maiano
- PARCO AVVENTURA DI VINCIGLIATA
via Vincigliata 2
- GIARDINO DI VILLA PEYRON
via Vincigliata 2

- fiesoleforyou.it
- museidifiesole.it



65

Bagno a Ripoli

6 KM FROM THE SANTA MARIA
NOVELLA STATION, BUS 23

Not far from Florence, Bagno a Ripoli is a quiet town among meadows and hills near the Arno river.



Where to go

- PARCO DI MONDEGGI
via di Pullicciano
- PARCO URBANO DI GRASSINA
Grassina
- GIARDINO DEI PONTI
via Roma 91
- GIARDINI DELLA RESISTENZA
via Brigate partigiane 1
- LIBRARY - CHILDREN'S SPACE
via di Belmonte 38

- biblioteca.comune.bagno-a-ripoli.fi.it/biblioteca

66

Scandicci

6 KM FROM THE SANTA MARIA
NOVELLA STATION, TRAM T4

The town is almost attached to Florence. You can stroll in the Park of Acciaiole, organize a picnic at the Park of Poggio Valicaia or take part in the wonderful activities in the Library.



Where to go

- PARCO DI POGGIO VALICAIA
via della Poggiona 5
- PARCO DELL'ACCIAIOLE
via Pantina 63
- LIBRARY - YOUTH SECTION
via Roma 38a

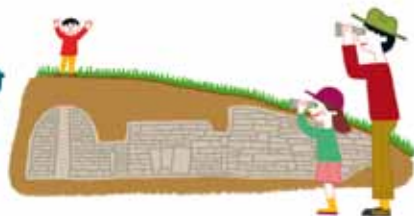
- comune.scandicci.fi.it



Sesto Fiorentino

8.5 KM FROM THE SANTA MARIA NOVELLA STATION, STATE RAILWAYS

It is at the foot of Monte Morello, the great green giant above the city of Florence where you can organize a walk or a picnic. In Sesto, you can explore the Etruscan tomb of Montagnola or bird watch in Parco



della Piana, where there are many species of waterfowl.



Lastra a Signa

8.5 KM FROM THE SANTA MARIA NOVELLA STATION, STATE RAILWAYS

Located along the river Arno and known in the past for its sandstone quarries, typical of the Florentine area, it is now also called the city of music for the splendid 16th century



67

Where to go

- PARCO DELLA PIANA E PODERE LA QUERCIOIA
via del Pantano 26
- TOMBA DELLA MONTAGNOLA
Via Fratelli Rosselli 95
- LIBRARY - YOUTH SECTION
piazza della Biblioteca 9

● comune.sesto-fiorentino.fi.it



Impruneta

12 KM FROM THE SANTA MARIA NOVELLA STATION, BUSITALIA 366A

villa bought by the opera singer Enrico Caruso: in its rooms and in the elegant garden, one seems to still hear him sing! In addition to this park you can walk and relax in the Di là d'Arno river park.

The history of Impruneta is tied to the medieval sanctuary dedicated to a sacred image of Maria, renovated over the centuries and still an important place of worship. If you happen to be in the area at the end of September, don't miss the spectacular grape fest, Festa dell'Uva.

Where to go

- VILLA CARUSO BELLOSGUARDO
via di Bellosguardo 54
- PARCO DI LÀ D'ARNO
viale 11 settembre 1973

● lastraontour.it

68

Where to go

- BASILICA DI SANTA MARIA ALL'IMPRUNETA
piazza Buondelmonti 26
- LIBRARY - CHILDREN'S SECTION
piazza Buondelmonti 19-20

● comune.impruneta.fi.it



Campi Bisenzio

13 KM FROM THE SANTA MARIA NOVELLA STATION, BUS 30 BUS CAP CE

Campi Bisenzio owes its name to the Bisenzio River that runs through the town and has some evocative nature areas.



Calenzano

13 KM FROM THE SANTA MARIA NOVELLA STATION, STATE RAILWAYS

The centre of Calenzano, on the hill, is medieval: the fortified village is very evocative and also looks onto a castle which houses Museo del figurino storico, with small soldiers of every era.

BOX INFO



Where to go

- PARCO DI VILLA MONTALVO
via di Limite 144
- BIBLIOTECA TIZIANO TERZANI
via di Limite 15
- OASI STAGNI DI FOCIGNANO
via del Ronco 5
- PARCO CHICO MENDES
via dell'Isola

● comune.campi-bisenzio.fi.it

CALENZANO
<<<



Where to go

- CASTLE
via dell'Orto
- MUSEO DEL FIGURINO STORICO
via del Castello 7
- PARCO DEL NETO
via Vittoria Emanuele
- LIBRARY
via della Conoscenza 11

● web.comune.calenzano.fi.it



Signa

14 KM FROM THE SANTA MARIA NOVELLA STATION, STATE RAILWAYS

If the sea is too far but you feel like a beach you can take a trip to Parco dei Renai, where you can run, play with sand, ride a bike or sail, take a swim in the pool or in the lake.

Where to go

- PARCO DEI RENAI
via dei Renai 9

REACHABLE BY CYCLE PATH FROM PARCO DELLE CASCINE

- parcorenai.it
- prolocosigna.it



Pontassieve



18 KM FROM SANTA MARIA
NOVELLA STATION, STATE
RAILWAYS

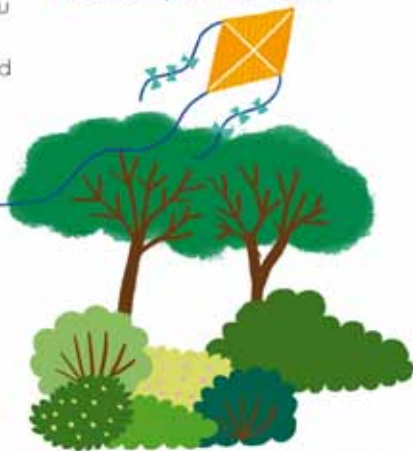
While the name recalls the ancient bridge that crossed the Sieve River, today in its place is the Medici bridge, so-called because the Medici ordered it built following a flood. In this lively town, you can find equipped gardens, a library and a playspace.



Where to go

- GIARDINO LA CITTÀ DEI BAMBINI
piazza dell'Unità Sieci
- GIARDINO DELLE MONTAGNOLE
piazza Mosca
- LIBRARY - CHILDREN'S SECTION
via Tanzini 23
- IL PAESE DEI BALOCCHI PLAYROOM
via Tanzini 25

● comune.pontassieve.fi.it



Vaglia



18 KM FROM THE SANTA MARIA
NOVELLA STATION, BUS 25A
AND BUSITALIA 307

In the Pratolino meadows is the gate to the immense Medici Park, famous for its huge sculpture by Giambologna depicting the giant of the Apennine: like an old giant kneeling, ready to stand up. The wide green expanses of the park invite you to relax and play, while the adventure park is located right in front.



Where to go

- PARCO MEDICEO DI PRATOLINO
via Fiorentina 276, Pratolino
- PARCO AVVENTURA IL GIGANTE
via Fiorentina 276, Pratolino
- LIBRARY - CHILDREN'S SECTION
piazza Demidoff 54, Pratolino

● comune.vaglia.fi.it

Rignano sull'Arno



24 KM FROM THE SANTA MARIA NOVELLA STATION, STATE RAILWAYS

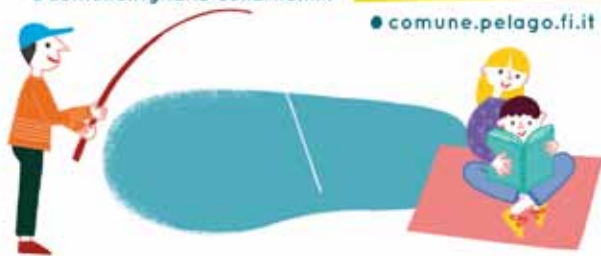
Another small town along the Arno river, surrounded by nature and hills.



Where to go

- GIARDINI BADEN POWELL
p.zza Caduti sul lavoro
- GIARDINI PUBBLICI
via P. Nenni, Bombone
- MUNICIPAL LIBRARY
via Garibaldi 25

● comune.rignano-sullarno.fi.it



Pelago



24.3 KM FROM THE SANTA MARIA NOVELLA STATION, BUSITALIA 343 A

It is a small town between the Arno and Sieve rivers, perched on a hill and surrounding the castle of the Guidi counts. It is also a good place to stop en route to Abazia di Vallombrosa.



Where to go

- GIARDINO BORSELLI
strada della Consuma 205
via delle Abetine
- GIARDINO SAN FRANCESCO
via del Malino 76

● comune.pelago.fi.it



Rufina



25.7 KM FROM THE SANTA MARIA NOVELLA STATION, STATE RAILWAYS

Rufina is located along the Sieve River but is famous for vineyards and wine: to know its history and secrets you can visit the vineyard and wine museum at Villa di Poggio Reale.



Where to go

- VILLA DI POGGIO REALE AND MUSEO DELLA VITE E DEL VINO
Viale Duca della Vittoria 7
- LIBRARY
piazza Trieste 13

● comune.rufina.fi.it

74



Figline and Incisa Valdarno



30 KM FROM THE SANTA MARIA NOVELLA STATION, STATE RAILWAYS

Located in the Valdarno, Figline and Incisa today have been united into a single Municipality. In addition to walks along the Arno River, there is Fattoria didattica del Poderaccio, Locality of San Michele 15, and Società Agricola Le Driadi, Via Grevigiana 4, Ponte agli Stolli.

● fiv-eventi.it



73

Reggello

32 KM FROM THE SANTA MARIA NOVELLA STATION, BUSITALIA 353

From the Ponte a Enna Visitor Centre you can take beautiful walks in Foresta di Sant'Antonio, admiring the evocative landscapes of Pratomagno and the spectacular Balze, geological structures with steep vertical walls. Abazia di Vallombrosa is certainly worth a trip, offering nature, peace and silence.

Where to go

- FORESTA DI SANT'ANTONIO
- ABBAZIA DI VALLOMBROSA
Loc. Vallombrosa
- MUNICIPAL LIBRARY
via Berlinguer 2, Cascia
- PARCO DELLE LASTRE
- RISERVA NATURALE BIOGENETICA DI VALLOMBROSA
- PERCORSO DIDATTICO-MUSEALE
Centro visite di Ponte a Enna
- PIEVE DI SAN PIETRO DI CASCIA
via Casaramola 25, Cascia

● comune.reggello.fi.it



Londa

38 KM FROM THE SANTA MARIA NOVELLA STATION, STATE RAILWAYS OR BUSITALIA 322

Protected by the mountains and surrounded by woods, Londa is great for walks and horseback riding; in addition to the small lake, Parco Nazionale delle Foreste Casentinesi begins here, with many paths and trails suitable for families.

Where to go

- PARCO NAZIONALE FORESTE CASENTINESI MONTE FALTERONA E CAMPIGNA
- LONDA VISITOR CENTRE
Loc. Parco del Lago,
tel. 348 7575663
- CENTRO IPPICO BOSCO DI RINCINE
Via Mili 3

● parcoforestecasentinesi.it
● comune.londa.fi.it



FIRENZE FAMILY TOUR

In Palazzo Vecchio and the Museo degli Innocenti you can pick up the **Florence Family Tour kit** free of charge: it takes you on a journey with stops that will bring you closer to the great wonders of the city centre, inviting you to seek, draw, sniff, and imagine. Remember: after two hours the kit must be returned.



FLORENCE GAME



If you prefer to use a tablet or a mobile phone you can download the Florence Game App for free: this game interconnects places, characters and symbols of different historical periods to help you get to know Florence while having fun. You can challenge each other or compete with other children and teenagers, looking for special cards that are only found around the city.



available free on



APPLE STORE



GOOGLE PLAY

On Florence's official tourism website, you can find news, descriptions, proposals and events happening in the city and its surroundings.

There are two special sections dedicated to families:

1. MUSEUMS SUITABLE FOR CHILDREN
2. ACTIVITIES FOR CHILDREN

www.firenzeturismo.it Call center +39 055 000

OFFICIAL SITE OF THE MUNICIPALITY OF FLORENCE
AND THE METROPOLITAN CITY OF FLORENCE



Project of the Municipality of Florence
Assessorato all'Urbanistica, Ambiente, Agricoltura
urbana, Turismo, Fiere e congressi, Innovazione
tecnologica, Sistemi informativi

In collaboration with

MUS.E

Istituto degli Innocenti

Sponsored by

Florence Chamber of Commerce

We would like to thank all the bodies and institutions involved, and the Municipalities of the Tourist Area of Florence and Florentine Area for their collaboration.



FLORENCE GAME

AN APP TO TRAVEL IN TIME AND
LEARN FLORENCE'S SECRETS.

available free on



APPLE STORE



GOOGLE PLAY



Tourist
Contact Center
+39 055 000

touristinfo@comune.fi.it



www.firenzeturismo.it

OFFICIAL SITE OF THE MUNICIPALITY
OF FLORENCE AND OF THE METROPOLITAN
CITY OF FLORENCE